

Model 4000A & 4001A Accelerometer



Silicone MEMS Accelerometer
Signal Conditioned Output
Temperature Calibrated
Low Cost, Lightweight

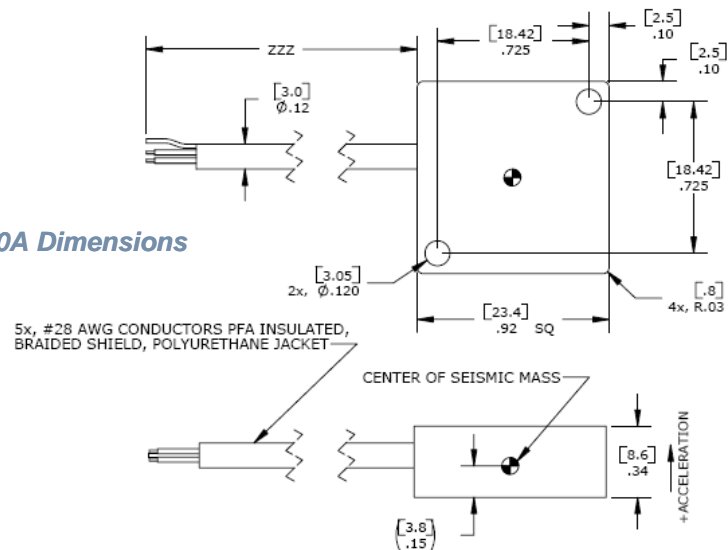
The Model 4000A & 4001A are economical signal conditioned accelerometers with integral temperature compensation. The accelerometers incorporate a 3rd generation silicon MEMS sensor providing outstanding performance. The accelerometers are packaged in a rugged aluminum housing ideal for transportation and instrumentation testing. The signal conditioned output incorporates a 2.5V reference that offers the user a differential or single-ended output.



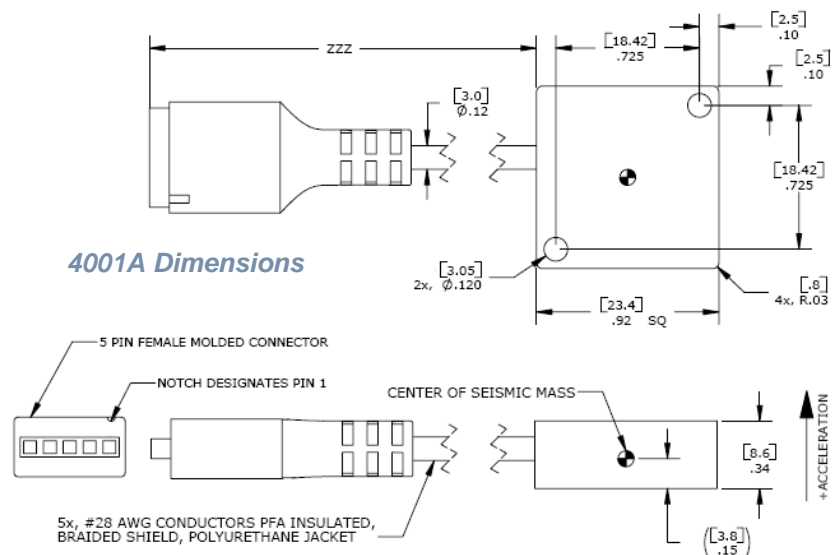
4001A Connector Attachment

dimensions

4000A Dimensions



4001A Dimensions



FEATURES

- $\pm 2g$ to $\pm 200g$ Dynamic Range
- High Over-Range Protection
- Signal Conditioned Output
- Low Power Consumption
- Lightweight
- Gas Damping
- 8 to 36Vdc Excitation Voltage

APPLICATIONS

- Low Frequency Monitoring
- Transportation
- Vibration Sensing
- Test & Instrumentation
- Machine Control
- Motion Analysis
- Tilt

Model 4000A & 4001A Accelerometer

performance specifications

All values are typical at +24°C, 100Hz and 12Vdc excitation unless otherwise stated. Measurement Specialties reserves the right to update and change these specifications without notice.

Parameters

DYNAMIC

	±2	±5	±10	±20	±50	±100	±200	Notes
Range (g)	±2	±5	±10	±20	±50	±100	±200	
Sensitivity (mV/g)	1000	400	200	100	40	20	10	
Frequency Response (Hz)	0-200	0-300	0-350	0-600	0-800	0-1300	0-1500	±5%
Natural Frequency (Hz)	700	800	1000	1500	4000	6000	8000	
Non-Linearity (%FSO)	±0.5	±0.5	±0.5	±0.5	±0.5	±0.5	±0.5	
Transverse Sensitivity (%)	<3	<3	<3	<3	<3	<3	<3	<1 Typical
Damping Ratio	0.7	0.7	0.7	0.7	0.7	0.7	0.6	
Shock Limit (g)	5000	5000	5000	5000	5000	5000	5000	

ELECTRICAL

Zero Acceleration Output (mV)	±100	±100	±100	±100	±100	±100	±100	Differential
Excitation Voltage (Vdc)	8 to 36	8 to 36	8 to 36	8 to 36	8 to 36	8 to 36	8 to 36	
Excitation Current (mA)	<5	<5	<5	<5	<5	<5	<5	
Bias Voltage (Vdc)	2.5	2.5	2.5	2.5	2.5	2.5	2.5	
Output Resistance (Ω)	<100	<100	<100	<100	<100	<100	<100	
Insulation Resistance (MΩ)	>100	>100	>100	>100	>100	>100	>100	@100Vdc
Turn On Time (msec)	<100	<100	<100	<100	<100	<100	<100	
Residual Noise (μV RMS)	500	300	300	350	400	350	400	Passband
Spectral Noise (μg/√Hz)	35	38	75	132	316	516	1033	Passband
Ground Isolation	Isolated from Mounting Surface							

ENVIRONMENTAL

Thermal Zero Shift (%FSO/°C)	±0.014	±0.014	±0.014	±0.014	±0.014	±0.014	±0.014	Typical
Thermal Sensitivity Shift (%/°C)	±0.028	±0.028	±0.028	±0.028	±0.028	±0.028	±0.028	Typical
Operating Temperature (°C)	-20 to 85							
Compensated Temperature (°C)	-20 to 85							
Storage Temperature (°C)	-40 to 90							

PHYSICAL

Case Material	Anodized Aluminum
Cable	PFA Insulated Leads, Braided Shield, PU Jacket
Weight (grams)	7
Mounting	2x #4 or M3 Screws
Mounting Torque	3 lb-in (0.3 N-m)
AWG	#28

北京赛斯维测控技术有限公司

北京市朝阳区望京西路48号

金隅国际C座1002

电话：+86 010 8477 5646

传真：+86 010 5894 9029

邮箱：sales@sensorway.cn

<http://www.sensorway.cn>

Wiring color code:
 4000A: +Excitation = Red; -Excitation = Black; +Output = Green; -Output = White; Programming = Brown
 (brown wire is used for programming and is not to be connected)
 4001A: +Excitation = Pin 3; -Excitation = Pin 1; +Output = Pin 4; -Output = Pin 2;

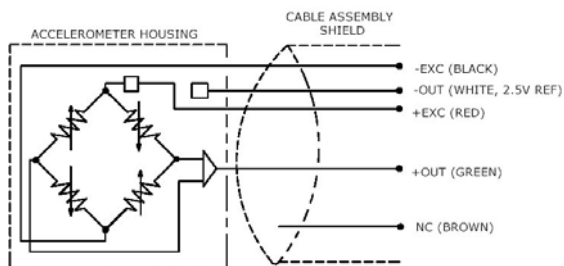
Supplied accessories: AC-D02295 Mating Pins (for model 4001A)

Optional accessories: AC-D02652 Triaxial Mounting Block
 101 Three Channel DC Signal Conditioner Amplifier

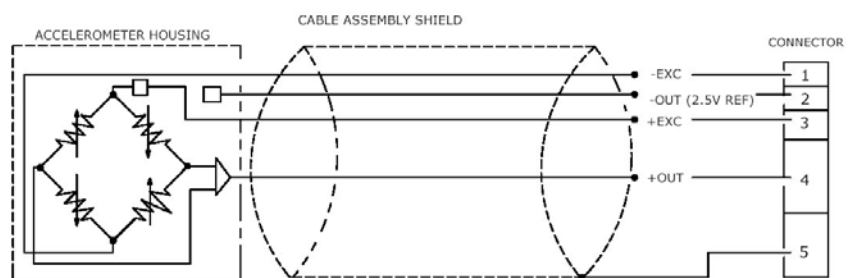
The information in this sheet has been carefully reviewed and is believed to be accurate; however, no responsibility is assumed for inaccuracies. Furthermore, this information does not convey to the purchaser of such devices any license under the patent rights to the manufacturer. Measurement Specialties, Inc. reserves the right to make changes without further notice to any product herein. Measurement Specialties, Inc. makes no warranty, representation or guarantee regarding the suitability of its product for any particular purpose, nor does Measurement Specialties, Inc. assume any liability arising out of the application or use of any product or circuit and specifically disclaims any and all liability, including without limitation consequential or incidental damages. Typical parameters can and do vary in different applications. All operating parameters must be validated for each customer application by customer's technical experts. Measurement Specialties, Inc. does not convey any license under its patent rights nor the rights of others.

schematic

4000A Schematic

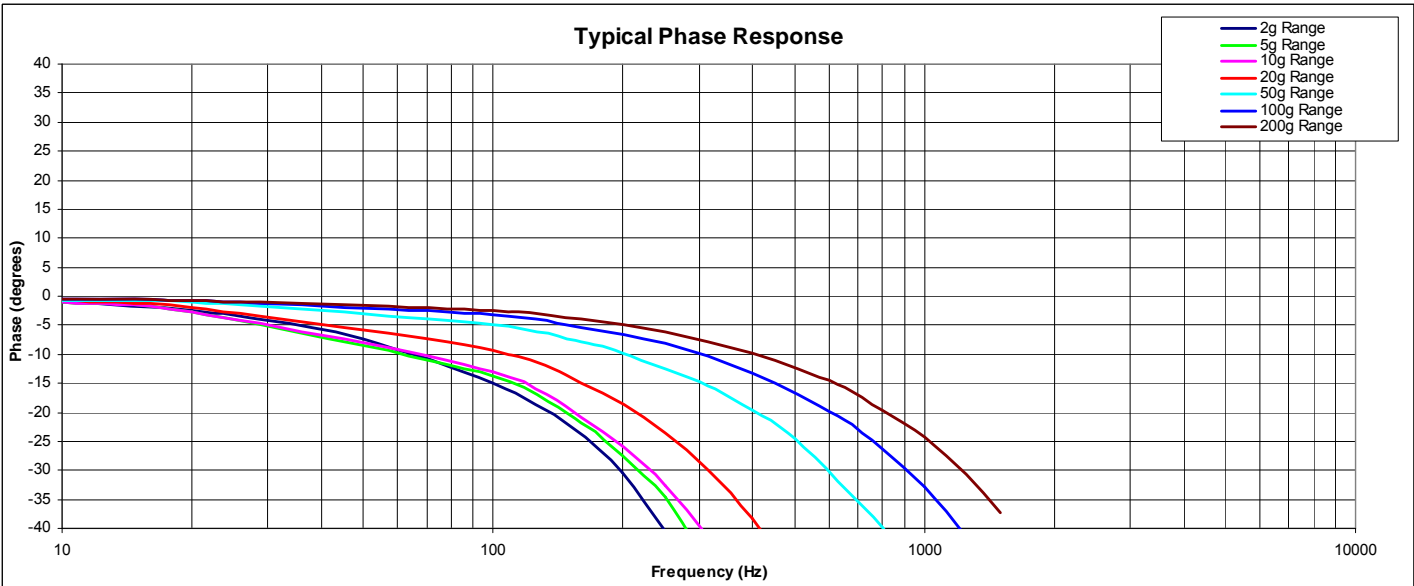
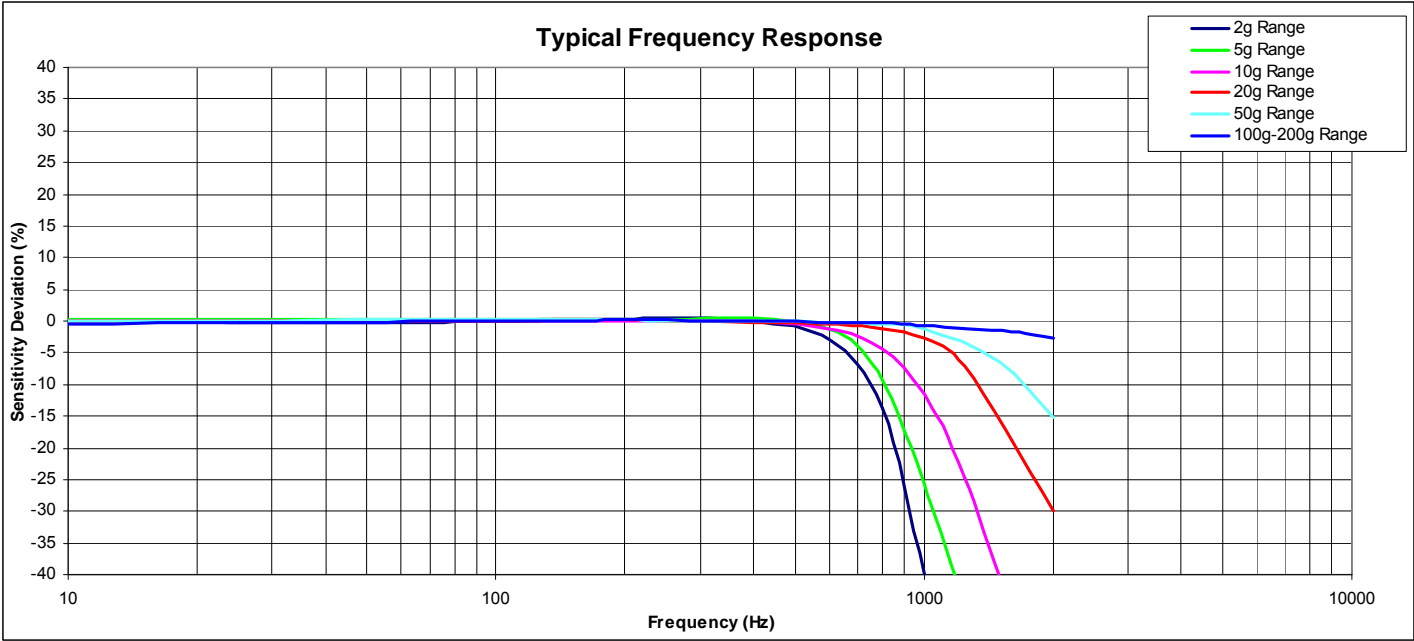


4001A Schematic



Model 4000A & 4001A Accelerometer

performance specifications



ordering info

PART NUMBERING Model Number+Range+ Cable Length

4000A-GGG-CCC
 | |
 | | Cable (060 is 60 inches)
 | Range (020 is 20g)

Example: 4000A-020-060
 Model 4000A, 20g, 60" (5ft) Cable

4001A-GGG-CCC
 | |
 | | Cable (014 is 14 inches)
 | Range (020 is 20g)

Example: 4001A-020-014
 Model 4001A, 20G, 14" Cable